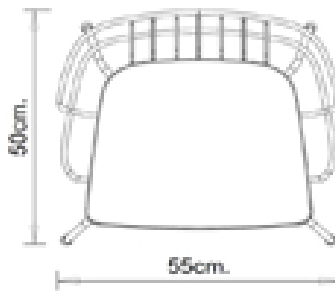
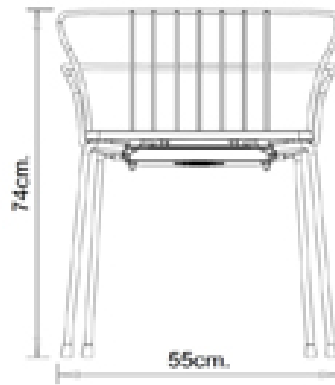


Flint 535-A

FLINT COLLECTION:

Flint 535-A, Flint 535-AM, Flint 535-B,
Flint 535-BM, Flint549, Flint 549M,



Armchair with 4 legs steel frame and backrest,
polyamide, Iroko wood or leather seat.

STACKABLE

4

WEIGHT

6.5 Kg

PACK

0,39 m³

PIECES PER BOX

4

FINISHES SEATING

PA POLYAMIDE



PANTONE 402 C Turtle-dove
≡



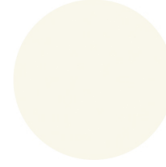
PANTONE 497 C Mocha
≡



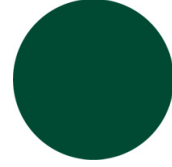
RAL 3003 Ruby red
≡



RAL 7016 Anthracite grey
≡



RAL 9010 Pure white
≡



RAL 6005 Moss green
≡

CU LEATHER



Black



Brick red



dark brown



Bordeaux

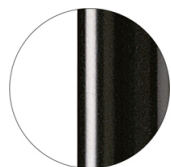
LE WOOD



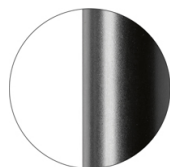
Iroko

FRAMES

AC STEEL



RAL 9005
VR Jet black



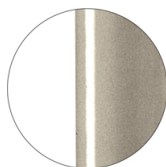
RAL 9005
VR Matt Jet Black



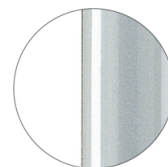
RAL 9016
VR Traffic white



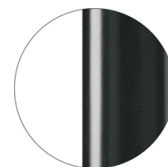
RAL 9010
VR Pure white



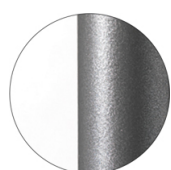
PANTONE 402 C
VR Turtle-dove



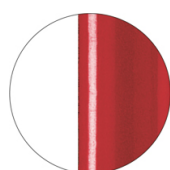
RAL 9006
VR White aluminium



RAL 7016
VR Anthracite grey



VR Pewter



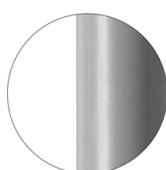
RAL 3003
VR Ruby red



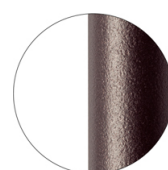
RAL 8017
VR Chocolate brown



RAL 6005
VR Moss green



RAL 7037
VR Matt Dusty grey



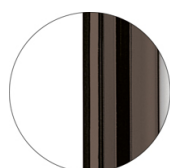
VR Rough metallic
bronze



CR Chrome



CR X Brass chrome



CR X Burnished chrome

CERTIFICATIONS

- > UNI/EN 16139:2013 - Par.4.1. Generale. Par. 4.2. Cesoiamento (14/04/15)
- > UNI/EN 16139:2013 - Par.4.3. Stabilità (14/04/15) > UNI/EN 16139:2013 - Prova 1. Carico statico sedile e schienale: 2-Uso estremo (14/04/15)
- > UNI/EN 16139:2013 - Prova 2. Carico statico sul fronte anteriore: 2-Uso estremo (14/04/15) > UNI/EN 16139:2013 - Prova 3. Carico verticale sullo schienale: 2-Uso estremo (14/04/15)
- > UNI/EN 16139:2013 - Prova 5. Carico statico laterale sui braccioli: 2-Uso estremo (14/04/15)
- > UNI/EN 16139:2013 - Prova 6. Carico statico verticale verso il basso sui braccioli: 2-Uso estremo (14/04/15)
- > UNI/EN 16139:2013 - Prova 8. Prova di fatica sedile e schienale: 2-Uso estremo (15/07/15)

USES

coffee & restaurants, retail,

Flint 535-AM



FLINT COLLECTION:

Flint 535-A, Flint 535-AM, Flint 535-B, Flint 535-BM, Flint549,
Flint 549M,



Armchair with 4 legs steel frame and backrest, upholstered seat.

WEIGHT

6,7 kg

PACK

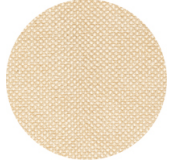
0,33 m³

PIECES PER BOX

2

FINISHES SEATING

TE FABRICS



Sawana Davis
+ 24 colours



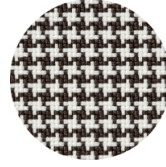
Citadel Camira
+ 16 colours



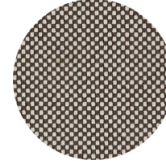
Inca Abitex
+ 15 colours



Medley Gabriel
+ 14 colours



Go-Couture Gabriel
+ 8 colours



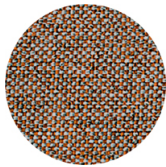
Go-Check Gabriel
+ 13 colours



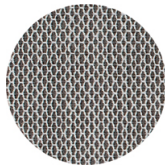
Crazy Flukso
+ 7 colours



Xtreme Camira
+ 16 colours



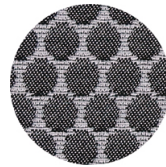
Rivet Camira
+ 12 colours



Criss Cross Gabriel
+ 19 colours



Valencia Spradling
+ 17 colours



Bubble Flukso
+ 9 colours



Europost 2 Gabriel
+ 16 colours



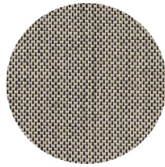
Fame Gabriel
+ 23 colours



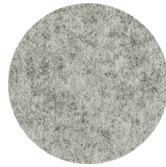
Parotega NF
Skai Hornschuch
+ 8 colours



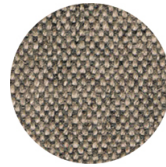
Superb Flukso
+ 13 colours



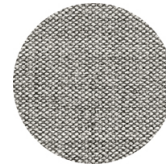
Balta Vescom
+ 12 colours



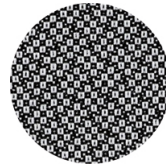
Blazer Camira
+ 14 colours



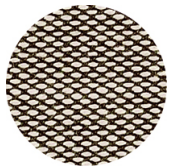
Main line flax Camira
+ 13 colours



Remix 2 Kvadrat
+ 18 colours



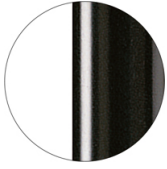
Revive 2 Kvadrat
+ 7 colours



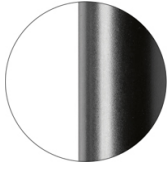
Steelcut trio 3 Kvadrat
+ 20 colours

FRAMES

AC STEEL



RAL 9005
VR Jet black
☀



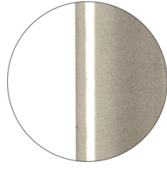
RAL 9005
VR Matt Jet Black
☀



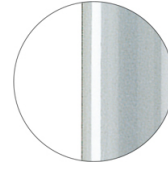
RAL 9016
VR Traffic white
☀



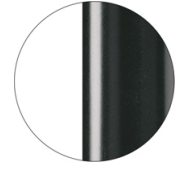
RAL 9010
VR Pure white
☀



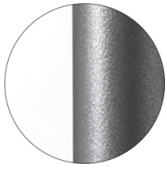
PANTONE 402 C
VR Turtle-dove
☀



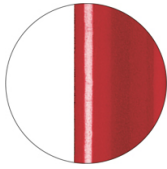
RAL 9006
VR White aluminium
☀



RAL 7016
VR Anthracite grey
☀



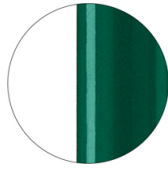
VR Pewter
☀



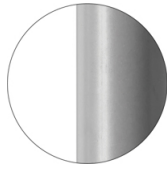
RAL 3003
VR Ruby red
☀



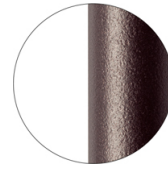
RAL 8017
VR Chocolate brown
☀



RAL 6005
VR Moss green
☀



RAL 7037
VR Matt Dusty grey
☀



VR Rough metallic
bronze
☀



CR Chrome



CR X Brass chrome



CR X Burnished chrome

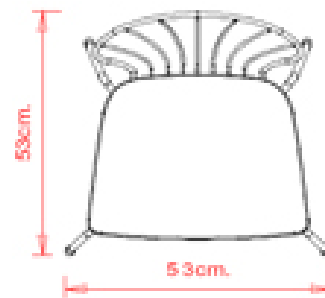
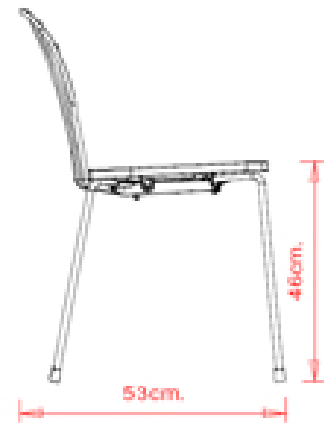
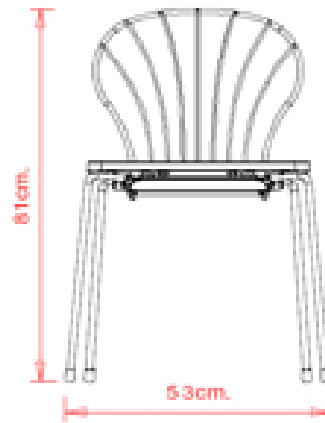
USES

coffee & restaurants, retail,

Flint 535-B

FLINT COLLECTION:

Flint 535-A, Flint 535-AM, Flint 535-B,
Flint 535-BM, Flint549, Flint 549M,



Chair with 4 legs steel frame and backrest,
polyamide or Iroko wood seat.

STACKABLE

4

WEIGHT

5,3 Kg

PACK

0,39 m₃

PIECES PER BOX

4

FINISHES SEATING

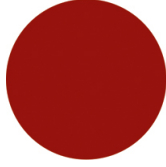
PA POLYAMIDE



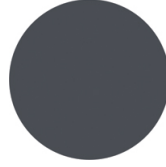
PANTONE 402 C Turtle-dove
≡



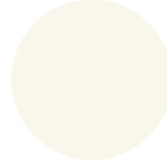
PANTONE 497 C Mocha
≡



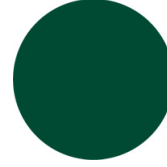
RAL 3003 Ruby red
≡



RAL 7016 Anthracite grey
≡



RAL 9010 Pure white
≡



RAL 6005 Moss green
≡

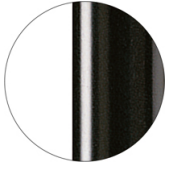
LE WOOD



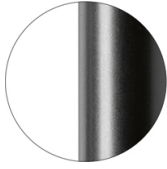
Iroko

FRAMES

AC STEEL



RAL 9005
VR Jet black



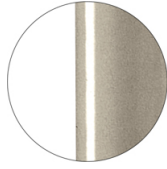
RAL 9005
VR Matt Jet Black



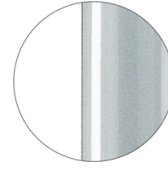
RAL 9016
VR Traffic white



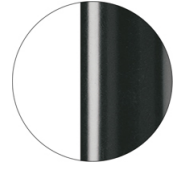
RAL 9010
VR Pure white



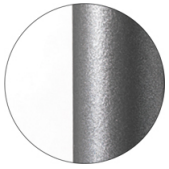
PANTONE 402 C
VR Turtle-dove



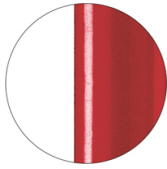
RAL 9006
VR White aluminium



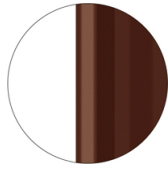
RAL 7016
VR Anthracite grey



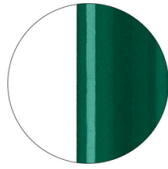
VR Pewter



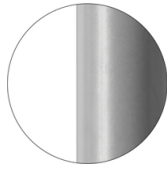
RAL 3003
VR Ruby red



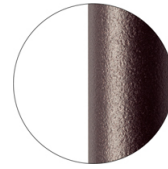
RAL 8017
VR Chocolate brown



RAL 6005
VR Moss green



RAL 7037
VR Matt Dusty grey



VR Rough metallic
bronze



CR Chrome



CR X Brass chrome



CR X Burnished chrome

CERTIFICATIONS

- > UNI/EN 16139:2013 - Par.4.1. Generale. Par.4.2. Cesoiamento (07/07/15)
- > UNI/EN 16139:2013 - Par.4.3. Stabilità (07/07/15) > UNI/EN 16139:2013 - Prova 1. Carico statico sedile e schienale: 2-Uso estremo (07/07/15)
- > UNI/EN 16139:2013 - Prova 2. Carico statico sul fronte anteriore: 2-Uso estremo (07/07/15)
- > UNI/EN 16139:2013 - Prova 3. Carico verticale sullo schienale: 2-Uso estremo (07/07/15)
- > UNI/EN 16139:2013 - Prova 8. Prova di fatica sedile e schienale: 2-Uso estremo (07/07/15)
- > UNI/EN 16139:2013 - Prova 9. Prova di fatica sul bordo anteriore: 2-Uso estremo (07/07/15)

USES

coffee & restaurants, retail,

Marc Sadler

Flint 535-BM



FLINT COLLECTION:

Flint 535-A, Flint 535-AM, Flint 535-B, Flint 535-BM, Flint549,
Flint 549M,



Chair with 4 legs steel frame and backrest, upholstered seat.

WEIGHT

5,5 kg

PACK

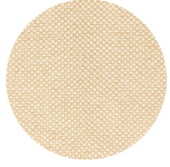
0,33 m³

PIECES PER BOX

2

FINISHES SEATING

TE FABRICS



Sawana Davis
+ 24 colours



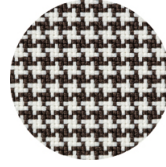
Citadel Camira
+ 16 colours



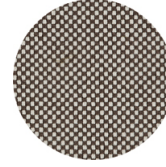
Inca Abitex
+ 15 colours



Medley Gabriel
+ 14 colours



Go-Couture Gabriel
+ 8 colours



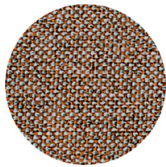
Go-Check Gabriel
+ 13 colours



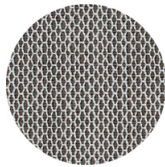
Crazy Flukso
+ 7 colours



Xtreme Camira
+ 16 colours



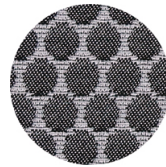
Rivet Camira
+ 12 colours



Criss Cross Gabriel
+ 19 colours



Valencia Spradling
+ 17 colours



Bubble Flukso
+ 9 colours



Europost 2 Gabriel
+ 16 colours



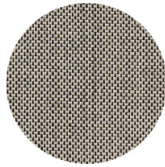
Fame Gabriel
+ 23 colours



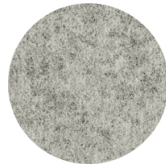
Parotega NF
Skai Hornschuch
+ 8 colours



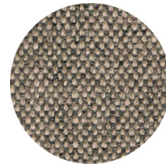
Superb Flukso
+ 13 colours



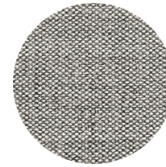
Balta Vescom
+ 12 colours



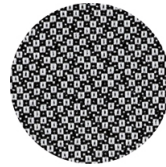
Blazer Camira
+ 14 colours



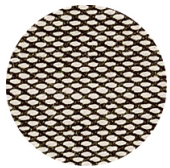
Main line flax Camira
+ 13 colours



Remix 2 Kvadrat
+ 18 colours



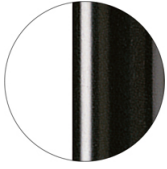
Revive 2 Kvadrat
+ 7 colours



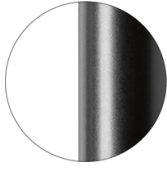
Steelcut trio 3 Kvadrat
+ 20 colours

FRAMES

AC STEEL



RAL 9005
VR Jet black
☀



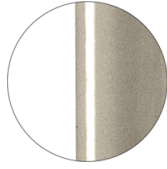
RAL 9005
VR Matt Jet Black
☀



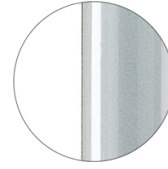
RAL 9016
VR Traffic white
☀



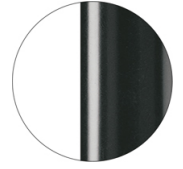
RAL 9010
VR Pure white
☀



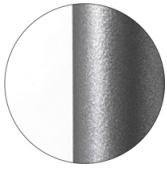
PANTONE 402 C
VR Turtle-dove
☀



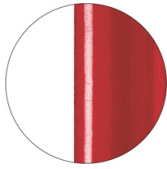
RAL 9006
VR White aluminium
☀



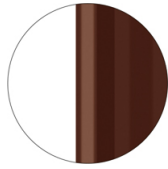
RAL 7016
VR Anthracite grey
☀



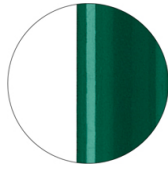
VR Pewter
☀



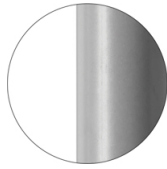
RAL 3003
VR Ruby red
☀



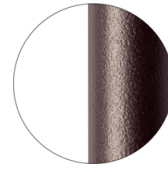
RAL 8017
VR Chocolate brown
☀



RAL 6005
VR Moss green
☀



RAL 7037
VR Matt Dusty grey
☀



VR Rough metallic
bronze
☀



CR Chrome



CR X Brass chrome



CR X Burnished chrome

USES

coffee & restaurants, retail,

Flint549



FLINT COLLECTION:

Flint 535-A, Flint 535-AM, Flint 535-B,
Flint 535-BM, Flint549, Flint 549M,



Stool, design Marc Sadler. 4-leg stool with steel frame, polyamide, leather or iroko seat.

STACKABLE

4

WEIGHT

5 kg

PACK

0,33 m³

PIECES PER BOX

2

FINISHES SEATING

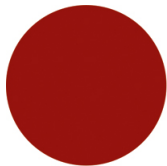
PA POLYAMIDE



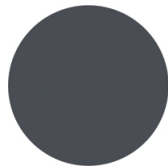
PANTONE 402 C Turtle-dove
≡



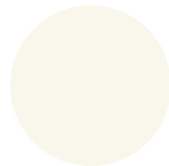
PANTONE 497 C Mocha
≡



RAL 3003 Ruby red
≡



RAL 7016 Anthracite grey
≡



RAL 9010 Pure white
≡



RAL 6005 Moss green
≡

CU LEATHER



Black



Brick red



dark brown



Bordeaux

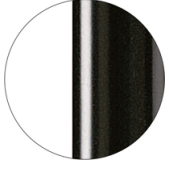
LE WOOD



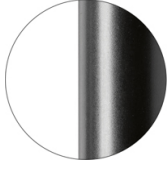
Iroko

FRAMES

AC STEEL



RAL 9005
VR Jet black
☀



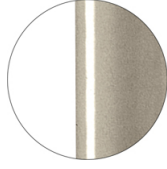
RAL 9005
VR Matt Jet Black
☀



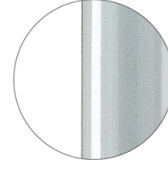
RAL 9016
VR Traffic white
☀



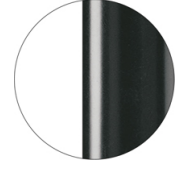
RAL 9010
VR Pure white
☀



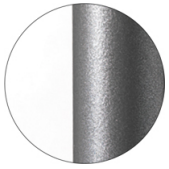
PANTONE 402 C
VR Turtle-dove
☀



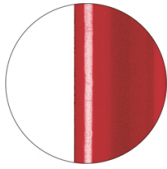
RAL 9006
VR White aluminium
☀



RAL 7016
VR Anthracite grey
☀



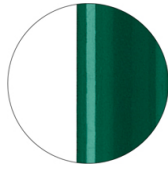
VR Pewter
☀



RAL 3003
VR Ruby red
☀



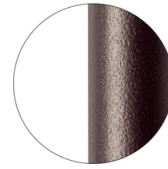
RAL 8017
VR Chocolate brown
☀



RAL 6005
VR Moss green
☀



RAL 7037
VR Matt Dusty grey
☀



VR Rough metallic
bronze
☀



CR Chrome



CR X Brass chrome



CR X Burnished chrome

USES

coffee & restaurants, retail,

Flint 549M



FLINT COLLECTION:

Flint 535-A, Flint 535-AM, Flint 535-B,
Flint 535-BM, Flint549, Flint 549M,



Stool, design Marc Sadler. 4-leg stool with steel frame and upholstered seat.

STACKABLE

4

WEIGHT

5 Kg

PACK

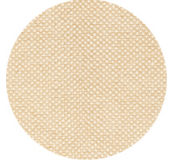
0,33 m³

PIECES PER BOX

2

FINISHES SEATING

TE FABRICS



Sawana Davis
+ 24 colours



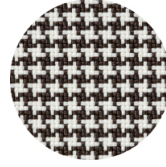
Citadel Camira
+ 16 colours



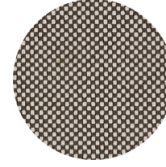
Inca Abitex
+ 15 colours



Medley Gabriel
+ 14 colours



Go-Couture Gabriel
+ 8 colours



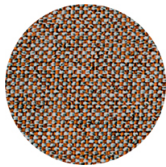
Go-Check Gabriel
+ 13 colours



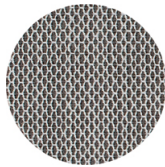
Crazy Flukso
+ 7 colours



Xtreme Camira
+ 16 colours



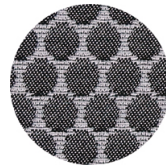
Rivet Camira
+ 12 colours



Criss Cross Gabriel
+ 19 colours



Valencia Spradling
+ 17 colours



Bubble Flukso
+ 9 colours



Europost 2 Gabriel
+ 16 colours



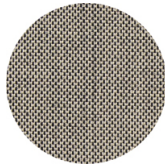
Fame Gabriel
+ 23 colours



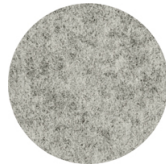
Parotega NF
Skai Hornschuch
+ 8 colours



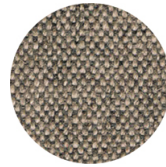
Superb Flukso
+ 13 colours



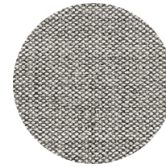
Balta Vescom
+ 12 colours



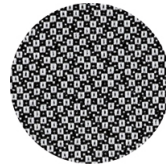
Blazer Camira
+ 14 colours



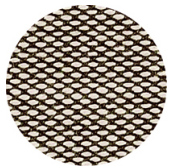
Main line flax Camira
+ 13 colours



Remix 2 Kvadrat
+ 18 colours



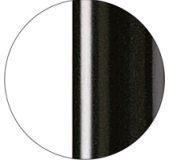
Revive 2 Kvadrat
+ 7 colours



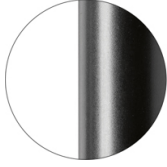
Steelcut trio 3 Kvadrat
+ 20 colours

FRAMES

AC STEEL



RAL 9005
VR Jet black
☀



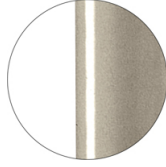
RAL 9005
VR Matt Jet Black
☀



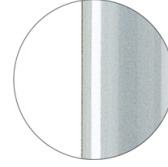
RAL 9016
VR Traffic white
☀



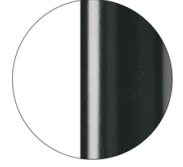
RAL 9010
VR Pure white
☀



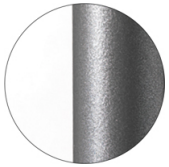
PANTONE 402 C
VR Turtle-dove
☀



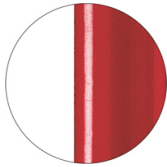
RAL 9006
VR White aluminium
☀



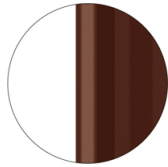
RAL 7016
VR Anthracite grey
☀



VR Pewter
☀



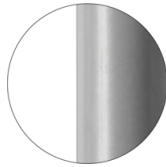
RAL 3003
VR Ruby red
☀



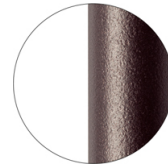
RAL 8017
VR Chocolate brown
☀



RAL 6005
VR Moss green
☀



RAL 7037
VR Matt Dusty grey
☀



VR Rough metallic
bronze
☀



CR Chrome



CR X Brass chrome



CR X Burnished chrome

USES

coffee & restaurants, retail,